



Ref.No: O2/17-01/2022; Date: 17 January 2022.

Commercial offer

Complex of Equipment for the extraction of Hard-to-Recover Oil Reserves

We invite customers and financial partners to use **Block-modular equipment for generating supercritical water** with a temperature of up to 500°C and a pressure at the mouth of an oil well up to 40 MPa, which warms up oil-bearing formations with a depth of up to 7000 meters, **allowing efficient extraction of hard-to-recover crude oil reserves.**

The equipment that has no analogues in the world manufactured using **the patented technology for generating supercritical water**, transported on 3 semi-trailers, can arrive at an existing or developed oil well on its own, deploy within a day, start supplying of heat carrier to a depth not accessible for other equipment. The equipment allows for a short period of additional extraction of several times more hydrocarbon resources from wells than they were extracted during the entire period of previous operation.

Economic indicators:

- **1 ton** of supercritical water, **ensures 1-15 tons of super-produced crude oil**;
- **Up to 240 tons per day** - the volume of production of supercritical water and its injection into the well;
- **Cost of injected 1 ton of supercritical water:** 50\$;
- **Excess profit** from using the equipment: **from \$ 50,000 per day.**

Physical indicators:

- **Oil production depth:** up to 7000 meters;
- **Heating temperature:** T to 500°C;
- **Physical pressure:** P up to 40 MPa;
- **Physical pressure at the bottom of the well:** P up to 61 MPa;
- Increase in the oil recovery coefficient - **CIN up to 50% and more**;
- Exclusion of flaring of associated petroleum gas;
- **Modification of heavy oil into light oil** due to exposure to high temperatures;
- **Reduction of sulfur** content in oil;
- Significant increase in the profitability of oil production;
- **Environmentally friendly technology.**

For Oil Producing Companies: the equipment will double the total volume of oil produced from each well, significantly reducing its cost.

For Oil Service Companies: the equipment will allow them to enter the existing fields and receive super-produced oil for themselves, or payment from the owners for each ton of heat carrier injected into the well.

For Investors: with a record payback period of 6-8 months, you will be able to quickly recoup the cost of buying equipment, and start making a significant profit on the invested capital.



More than 70% of all remaining world oil reserves are classified as hard-to-recover. The production of TRIZ without the use of methods of increasing oil recovery is economically unprofitable. The most effective and common methods of extraction of hard-to-recover oil are thermal methods of exposure to the productive reservoir with superheated steam. However, taking into account the fact that more than half of the hard-to-recover oil reserves are located at a depth of more than 1 km, the use of thermal methods in the form of superheated steam injection into the reservoir to a depth of more than 1 kilometer does not give the desired effect and becomes economically impractical.

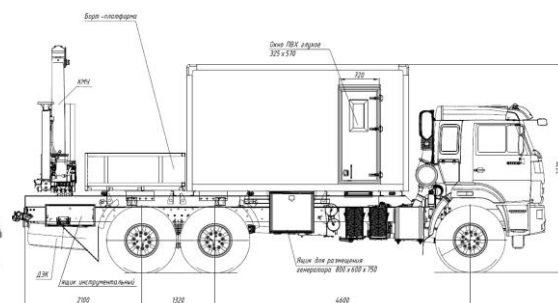
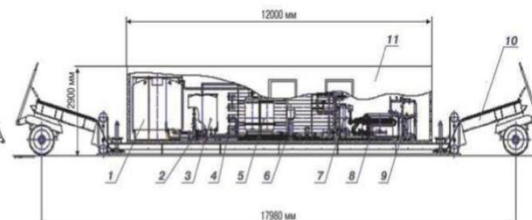
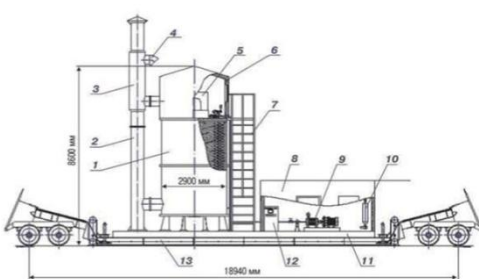
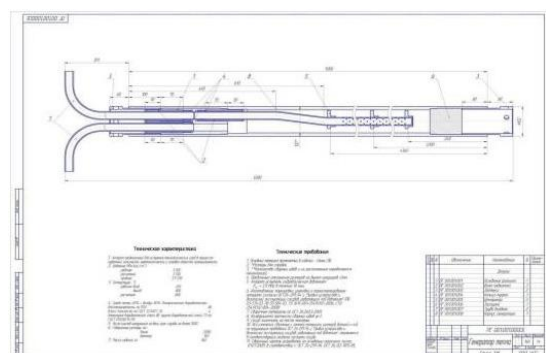
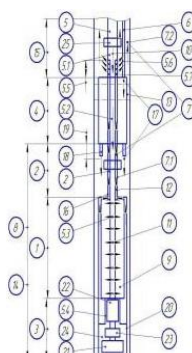
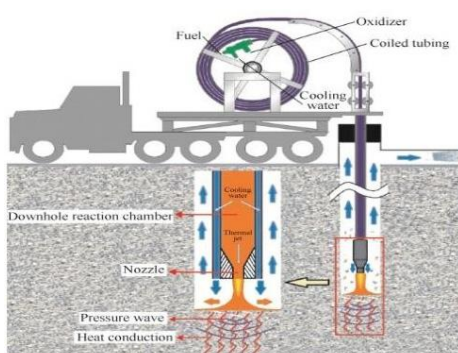
The generator of supercritical water with a temperature of up to 500°C, pumped into the well by a **special system of flexible continuous pipes**, without loss of temperature, allows you to effectively affect oil – bearing formations, and **extract heavy, high-viscosity, paraffin oil** lying at depths of more than 1 kilometer, and also provides the extraction of kerogens - solid, immature oil.

Taking into account the ability of supercritical water to **oxidize organic matter into simple and environmentally friendly substances** – into CO₂, water and thermal energy, in parallel with oil production the equipment allows to **dispose of oil sludge and asphaltene sediments** in the soil, implementing **closed-cycle technology**.

The technology of using supercritical water has shown its high efficiency, and has a **high export potential**. The equipment is suitable **for customers who have developed or depleted oil wells** on their territory, as well as for customers who want to **increase the volume of extracted oil** from existing wells or new fields.

The equipment was launched in 2018, and since then it has been successfully operating in industrial mode. **The additional oil production from each well averaged 2 780 – 3 400 tons.** Today, the technology has been significantly improved - the cost price has been reduced, reliability and efficiency of work have been increased.

DESIGN OF A DOWNHOLE SUPERCRITICAL WATER STEAM GENERATOR





International Platform ProValue Industry

+7 904 175 7770 (Russia), supply@provalue.ru

Website: <https://provalue.ru/en/>

Skype: filoxsee

We are ready to offer you:

1. Production of equipment to order;
2. Provision of oilfield services.

We invite customers and investors to discuss options for the production and use of a Supercritical Water generator for hard-to-recover oil extraction at your fields. **To get started, please contact us at the specified contacts, and inform us in what conditions you plan to use this Equipment.**

With respect,
Directorate of ProValue Industry



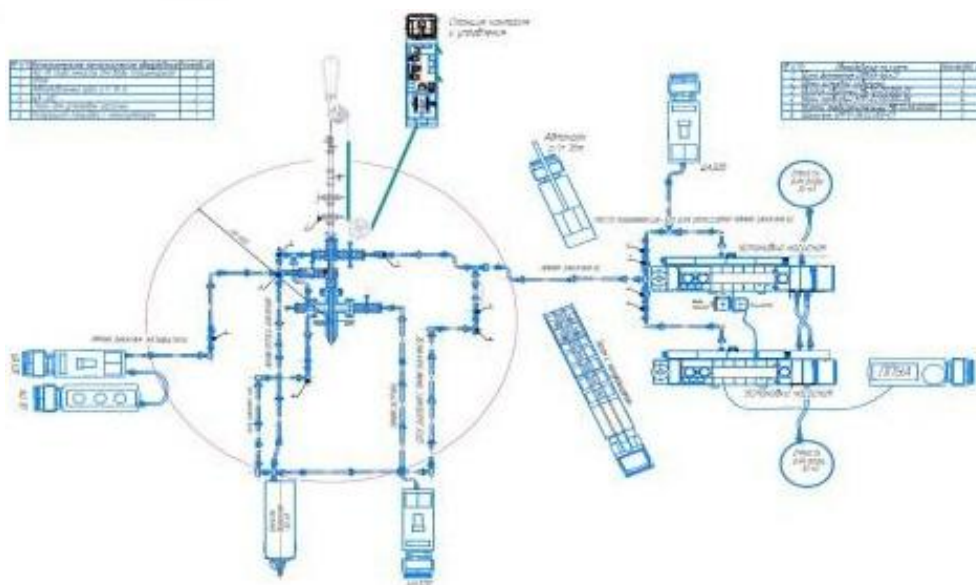
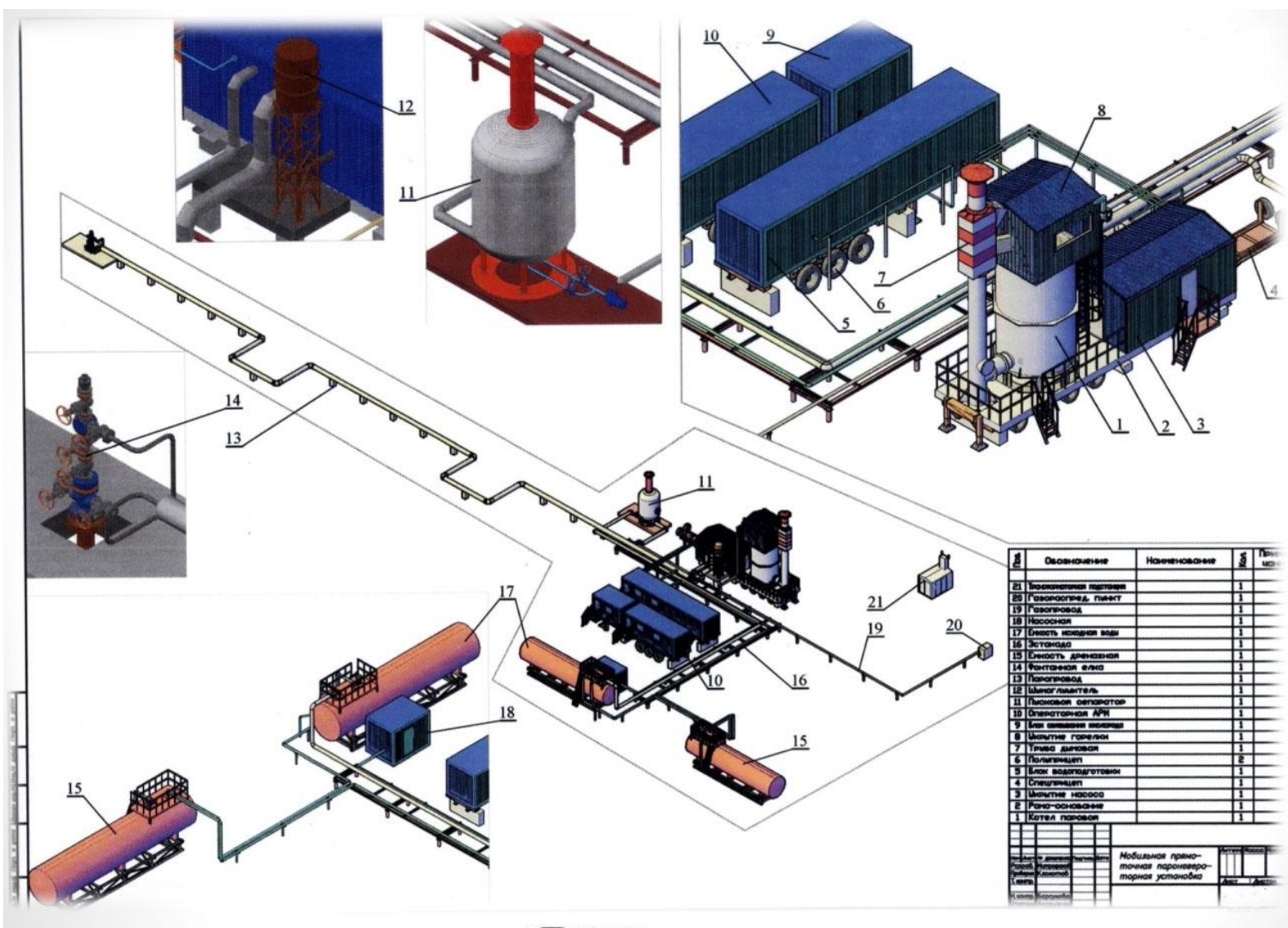
International Platform ProValue Industry

+7 904 175 7770 (Russia), supply@provalue.ru

Website: <https://provalue.ru/en/>

Skype: filoxsee

THE LAYOUT OF THE FIELD





International Platform ProValue Industry

+7 904 175 7770 (Russia), supply@provalue.ru

Website: <https://provalue.ru/en/>

Skype: filoxsee

GENERAL VIEW OF THE FIELD





International Platform ProValue Industry

+7 904 175 7770 (Russia), supply@provalue.ru

Website: <https://provalue.ru/en/>

Skype: filoxsee

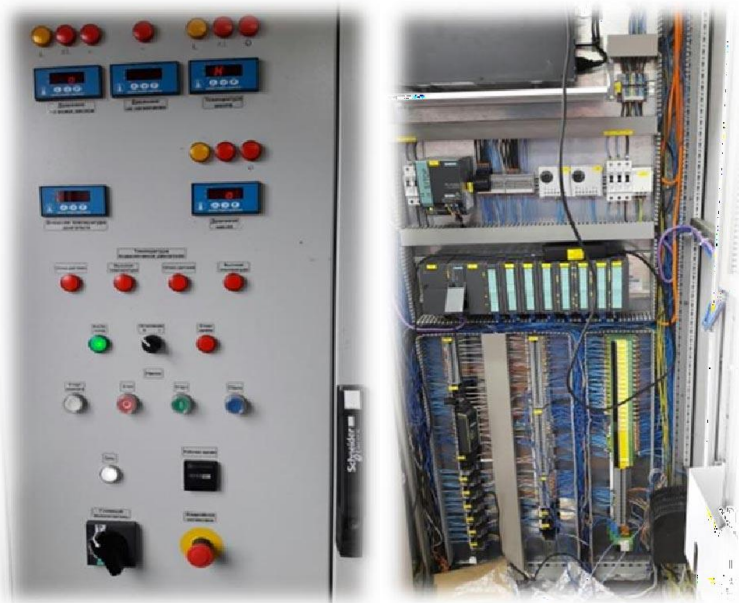
PLUNGER PUMP FOR COLD WATER SUPPLY



WORKING AGENT DISTRIBUTION MODULE FOR WELLS



MANAGEMENT SYSTEM



BURNER ROOM





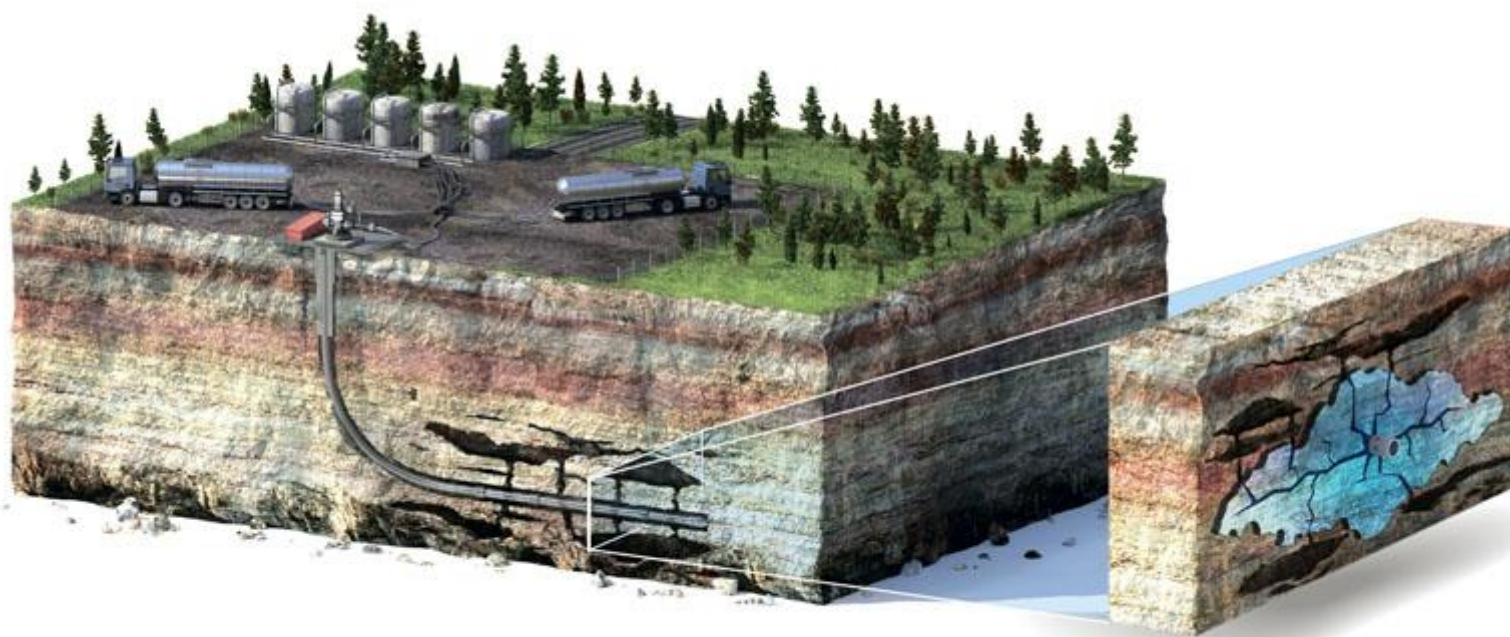
International Platform ProValue Industry

+7 904 175 7770 (Russia), supply@provalue.ru

Website: <https://provalue.ru/en/>

Skype: filoxsee

We invite you to cooperate!



Contacts

If you have any questions, you can contact us:

Email: supply@provalue.ru

Site: <https://provalue.ru/en/>

Skype: filoxsee

Phone / WhatsApp: +7 904 175 7770